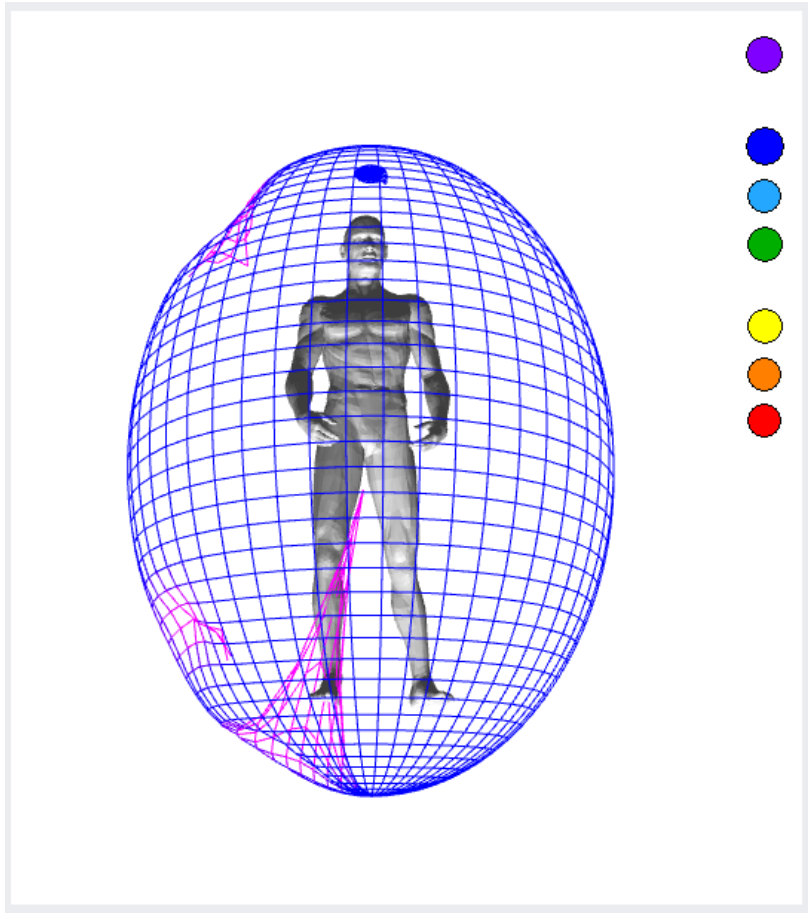









Operator: PH: EMAIL: Sex: DOB: dd mmm yyyy Blood Group:

## AURA ANALYSIS

The energy field is slightly off balance with mild field deformations connected to the root chakra primarily.



### ***What is the Muladhara chakra?***

-  The first energy center - Root (base, base) chakra
-  Location: base of the spine (coccyx)
-  The organs and systems associated with the chakra: lumbar - sacral spine, rectum, prostate, urethra, cervix, the lower limbs.
-  Color: red
-  Element: Earth.
-  The energy of the center: the vital energy
-  The essence of the center: survival, safety.
- The level of the body, excretory and sexual functions, motor functions, and physical potential, energy supply higher chakras
- The level of the soul: a sense of security, stability and tradition.
- Spirit Level: the will to live.

Violations at the level of the body: diseases of the rectum, prostate, gynecological diseases, pain in the back, legs, mental illness, low vitality, cancer.

Violations at the soul level: insecurity, instability, fear, mistrust, secrecy, aggressiveness, irritability, impulsiveness.

Level violations of the spirit: reducing the will to live, passivity.

Correction of violations: get rid of the fear, distrust of life, increase self-confidence.

Affirmations: My life goes smoothly and rhythmically. I trust life and the life guards me. I am always safe. Life helps me to achieve material prosperity.

Operator: PH: EMAIL: Sex: DOB: dd mmm yyyy Blood Group:



Energy levels 1-3 are NORMAL HEALTH/ENERGY indicators  
Energy level 4 indicates BEGINNING STAGE of potential illness/imbalance  
Energy level 5 indicates a possible ACUTE problem/low energy  
Energy level 6 indicates a CHRONIC imbalance/low energy